

# The *i*\* Framework: The Way Ahead

**Xavier Franch**

**Universitat Politècnica de Catalunya (Barcelona, Spain)**

**RCIS'12, Valencia, May 2012**



**Group of Software Engineering for Information Systems**

UNIVERSITAT POLITÈCNICA DE CATALUNYA

# Outline

- Motivation
- Open Issues
- Community Actions

# Motivation: why strategic modeling?

Commitment

Intentions

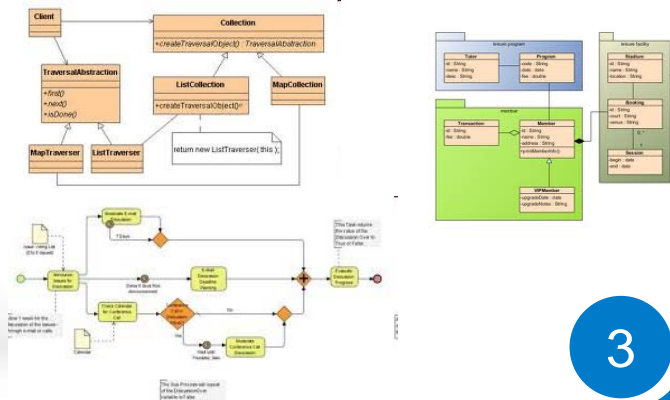
Abilities

Desires

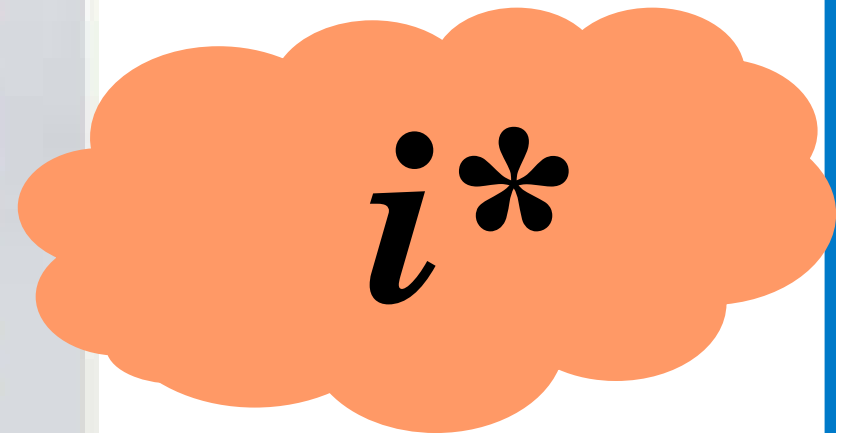
Strategic modeling

What-if

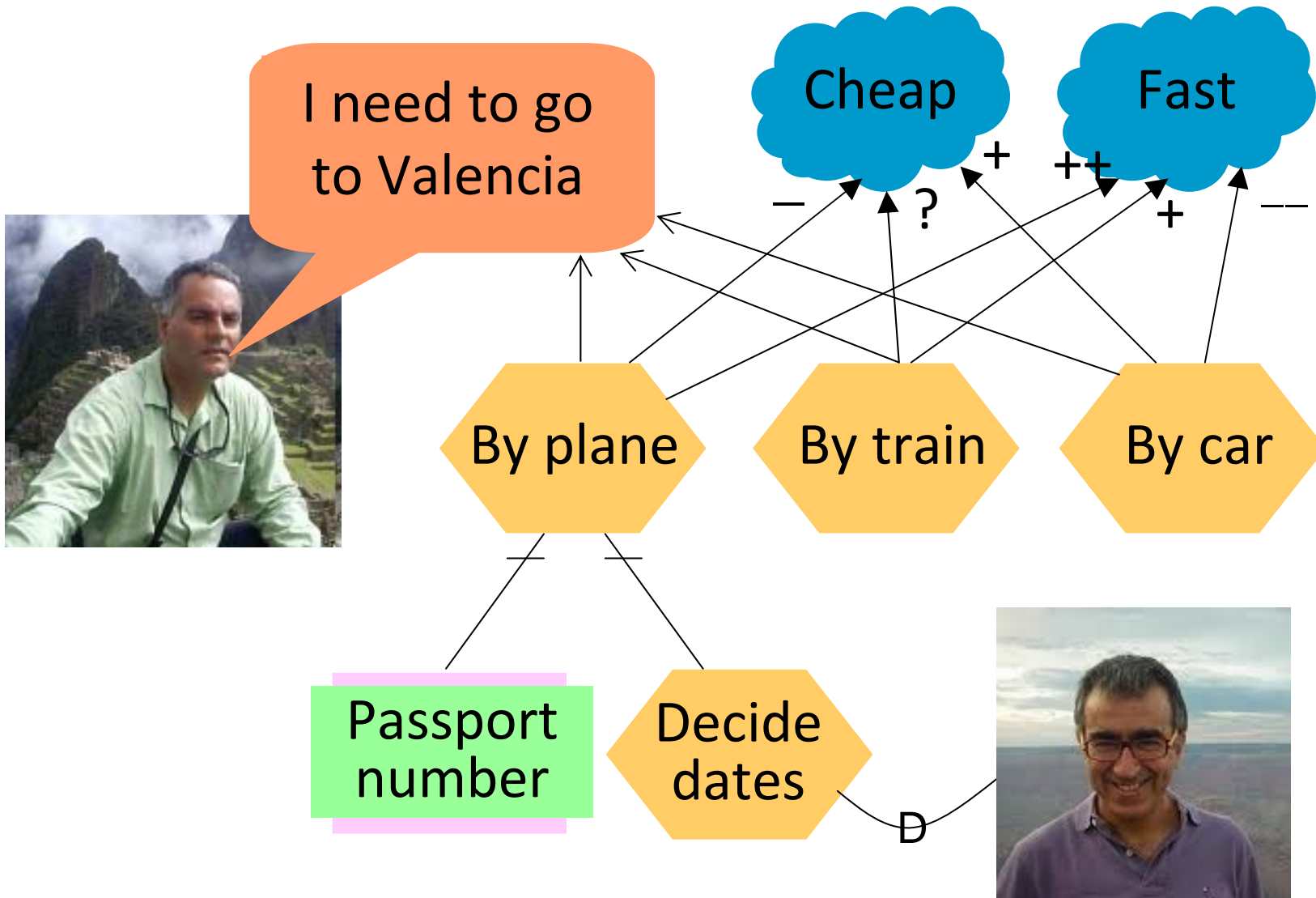
Rationale



# Approaches to intentional modeling



# Why $i^*$ ?



# *i\** used in several disciplines

Requirements  
Engineering

Business  
Modeling

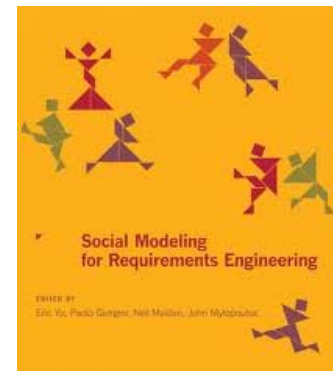


Business  
Intelligence

Architectural  
Design

# i\* current use

The i\* Framework: The Way Ahead



# *i\** current use



*i\** community



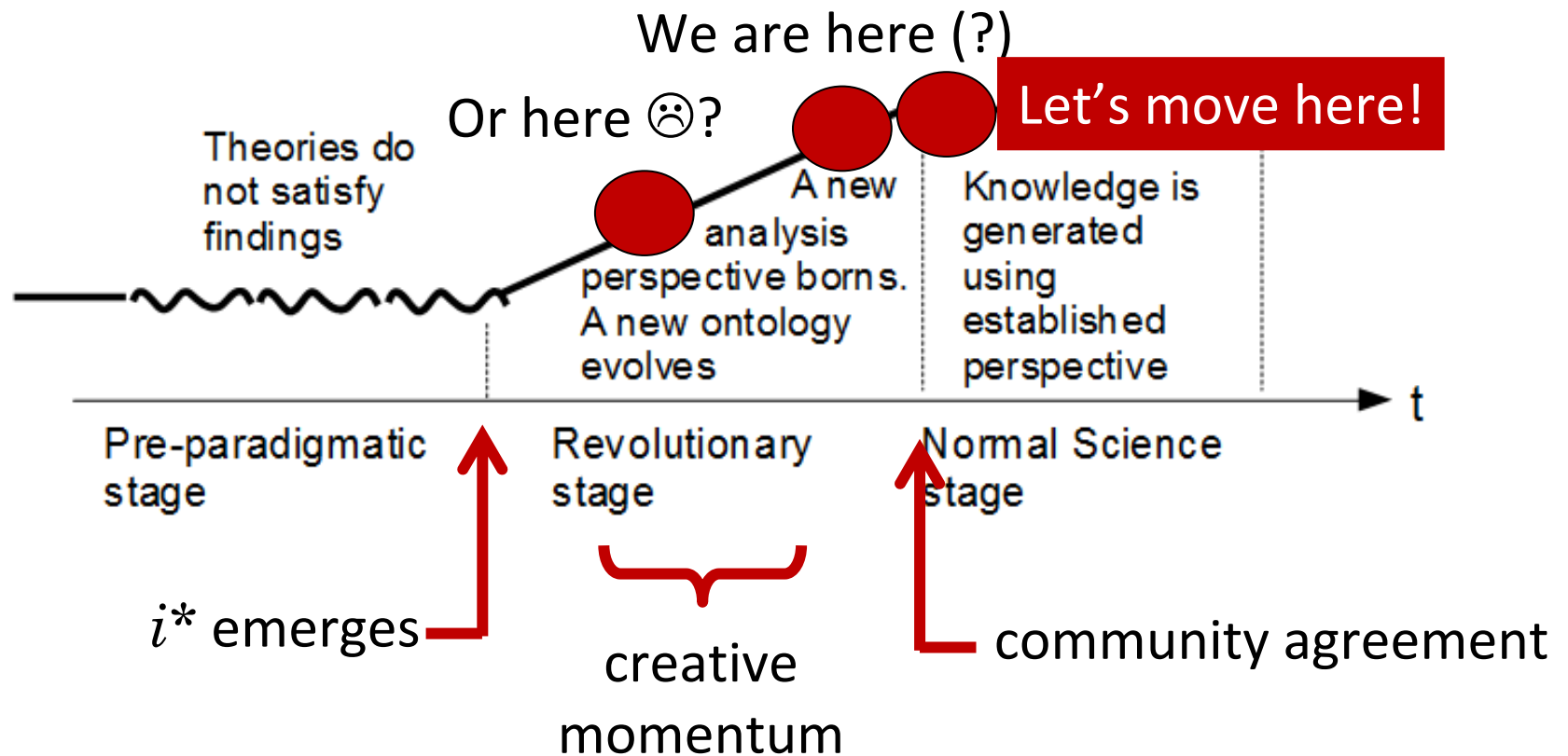
outside world





# Is that strange?

- Kuhn's concept of "scientific revolution"

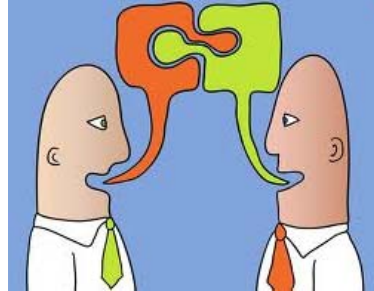


# The Way Ahead

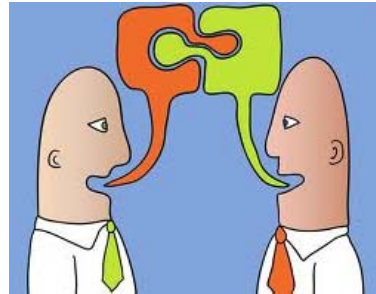


*Which are the open issues to face during this journey?*

# Open Issues

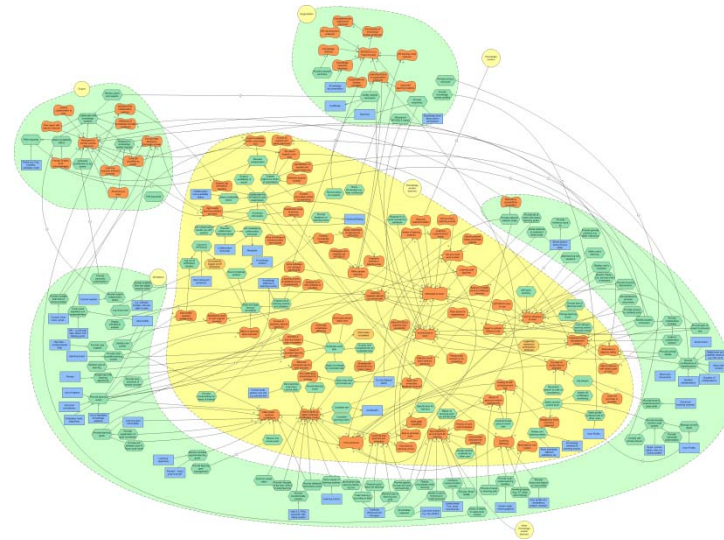
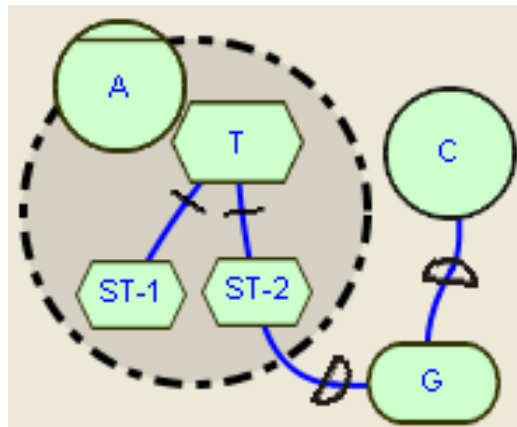


# Open Issue 1. The Language



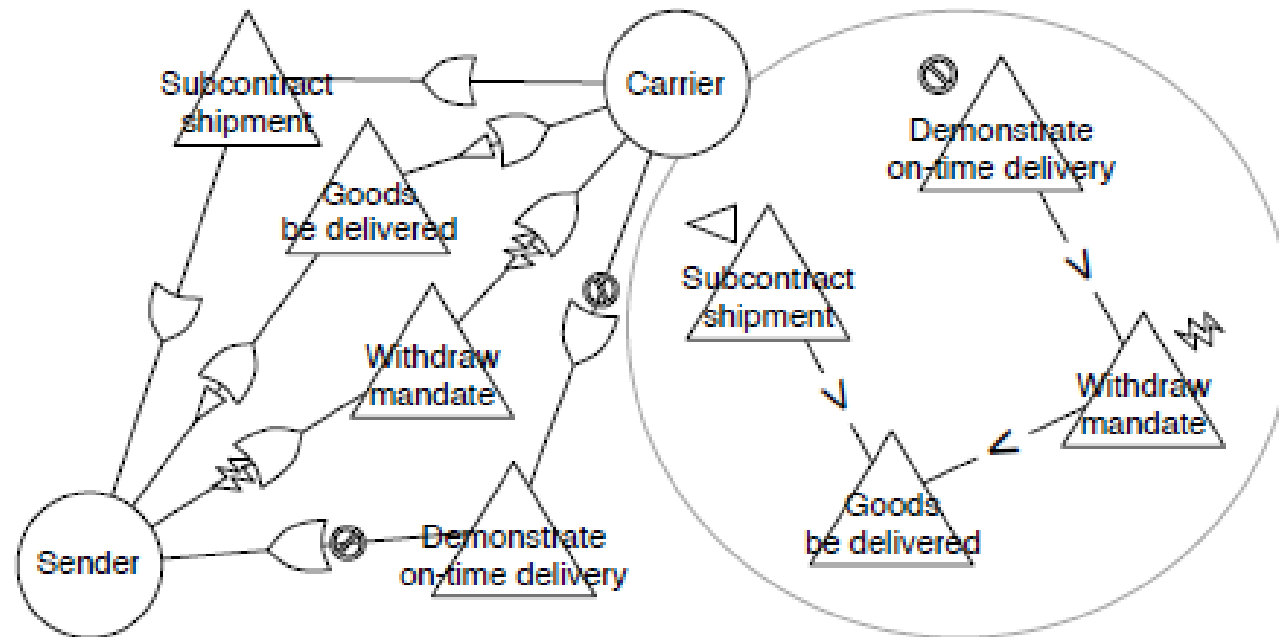
# Open Issue 1. The Language

- How is the  $i^*$  framework used by modellers?



# Open Issue 1. The Language

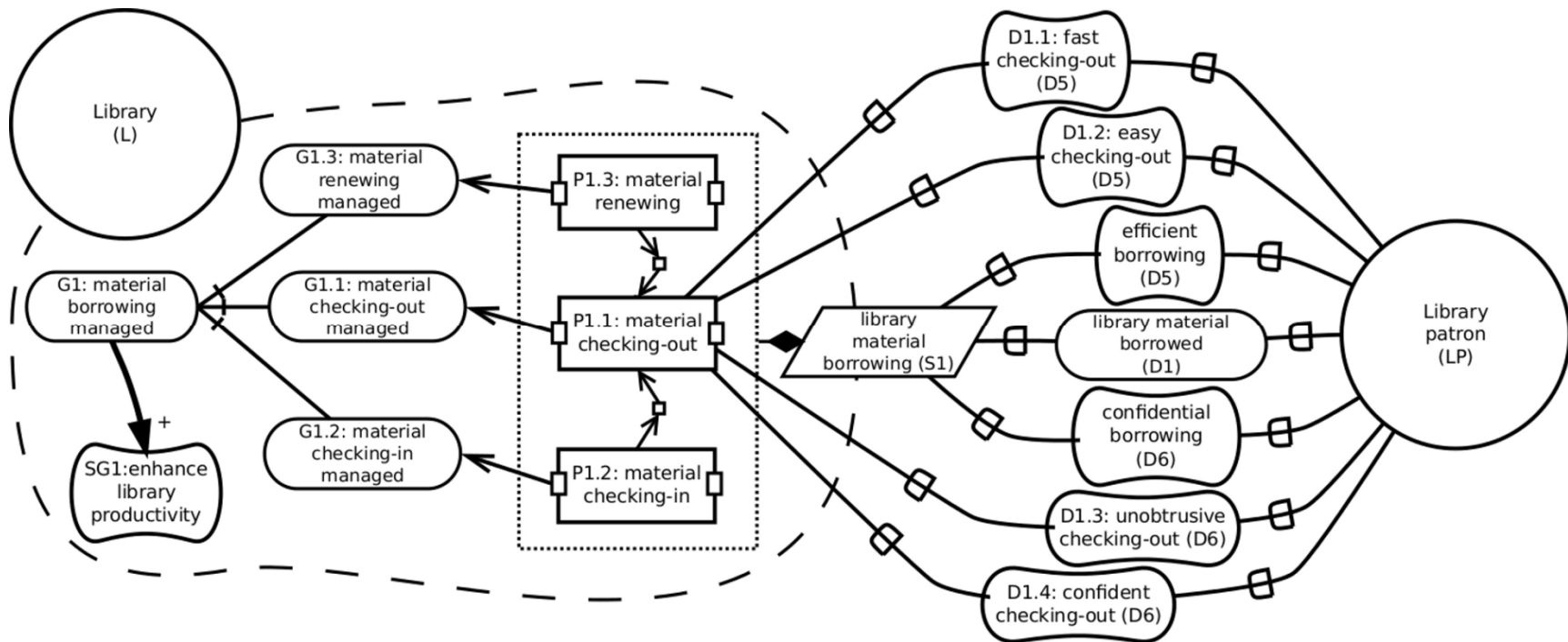
- Which are the usual variations?



*Extensions*

# Open Issue 1. The Language

- Which are the usual variations?

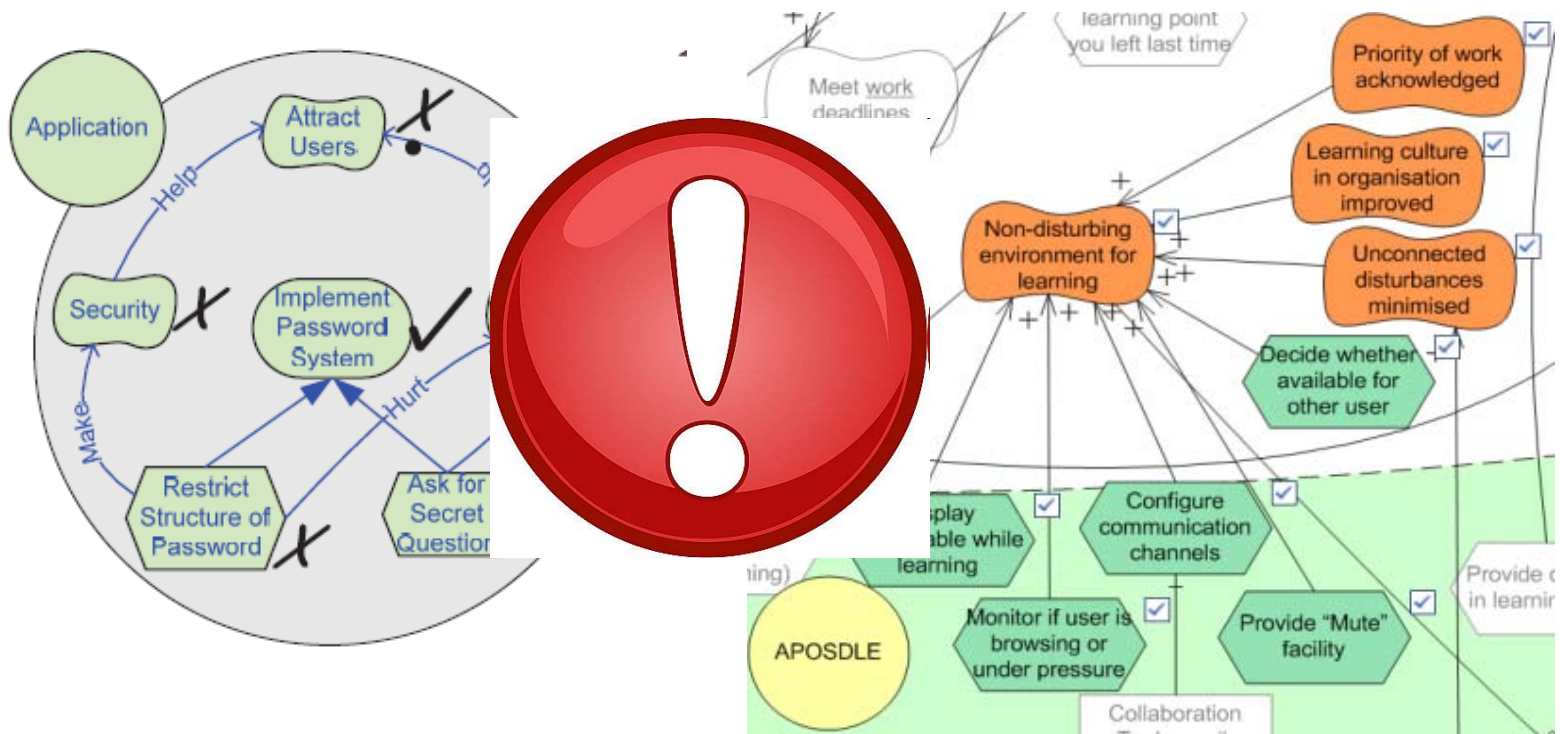


*Paradigm shifts*



# Open Issue 1. The Language

- Which are the usual variations?

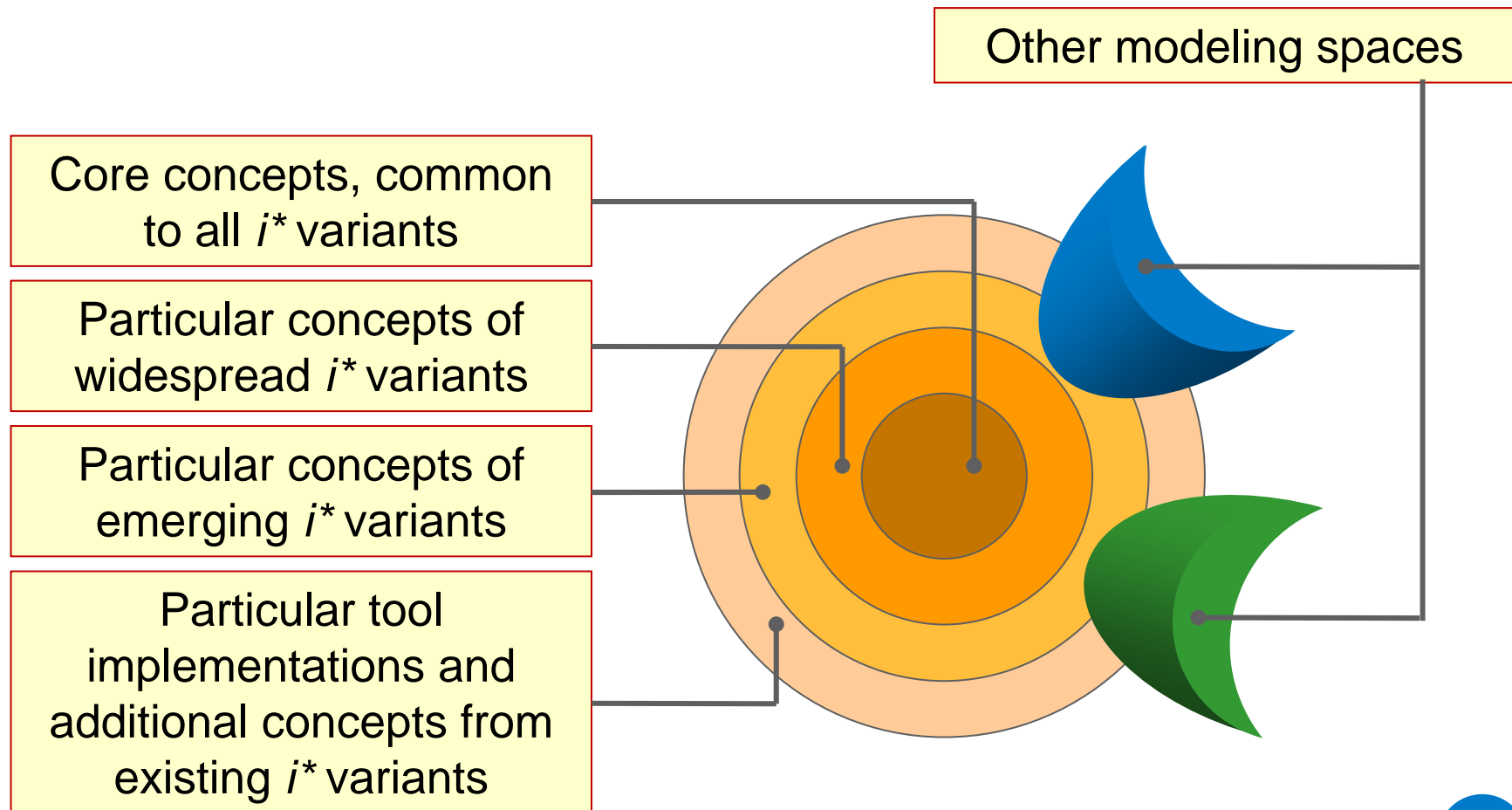


***Small variations on core constructs***



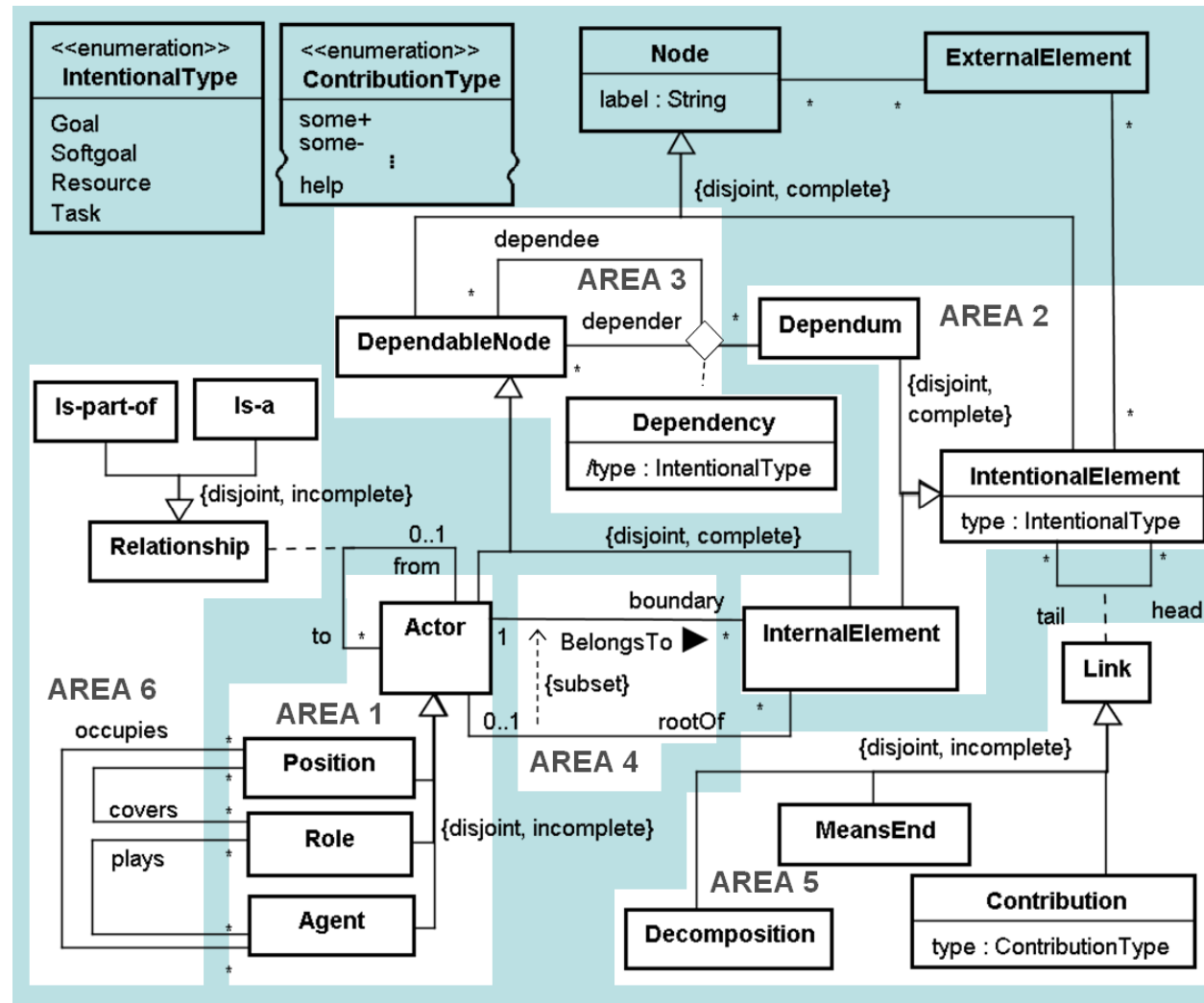
# The Way Ahead

- Identification of a language core



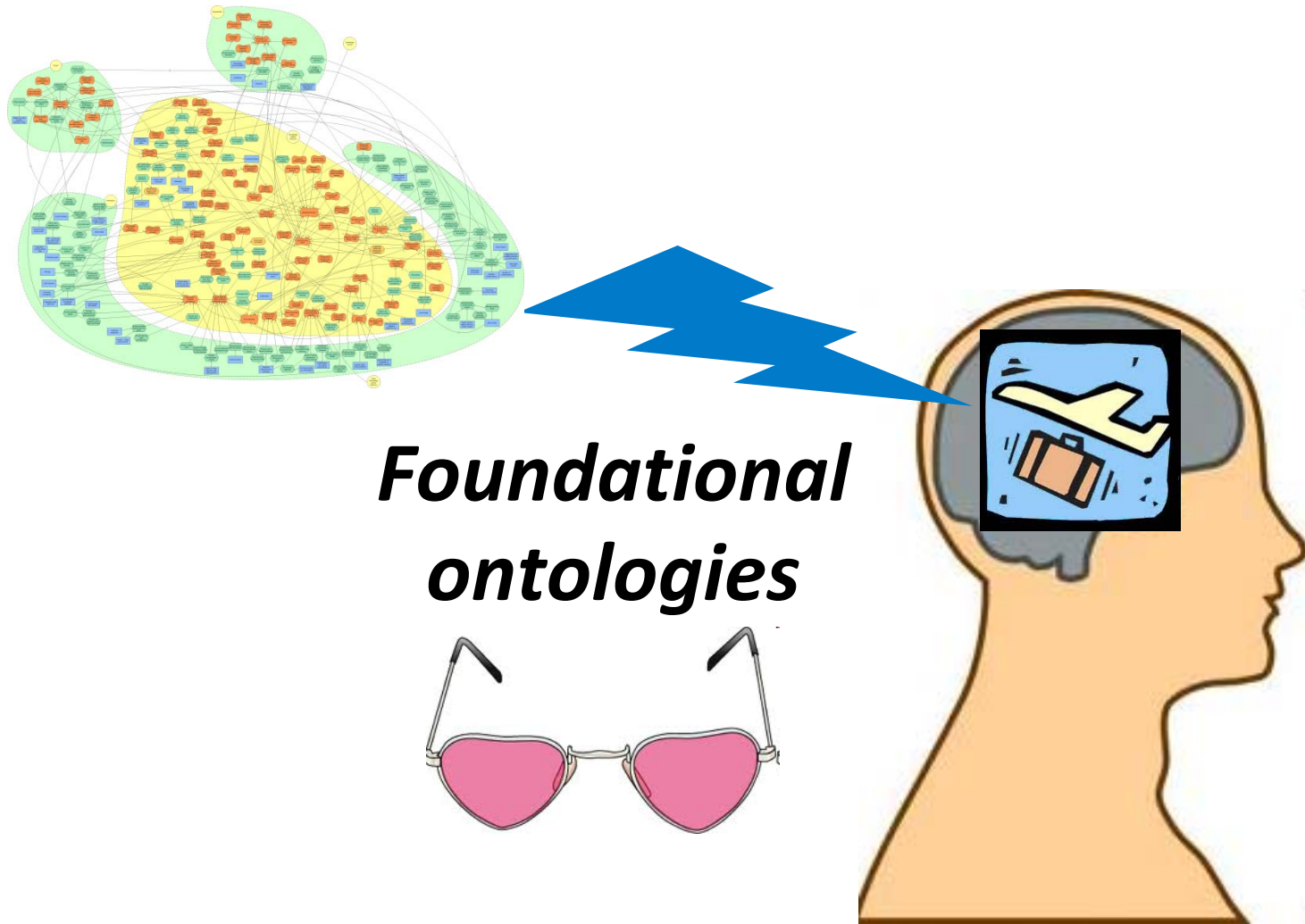
# The Way Ahead

- Specifying the language core: syntax



# The Way Ahead

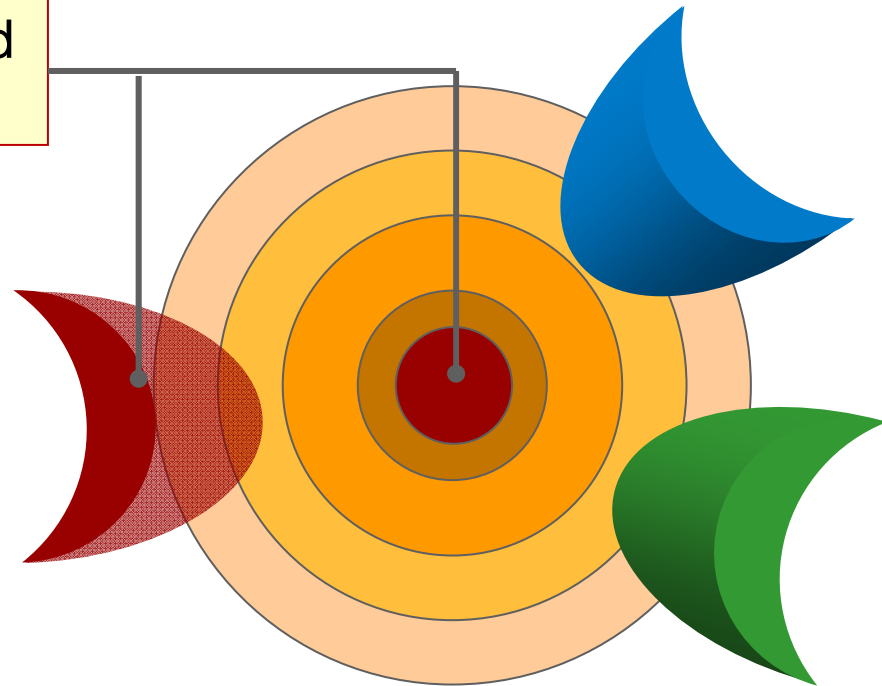
- Specifying the language core: semantics



# The Way Ahead

- $i^*$  for practitioners?

Meaningful, value-oriented  
concepts for practitioners

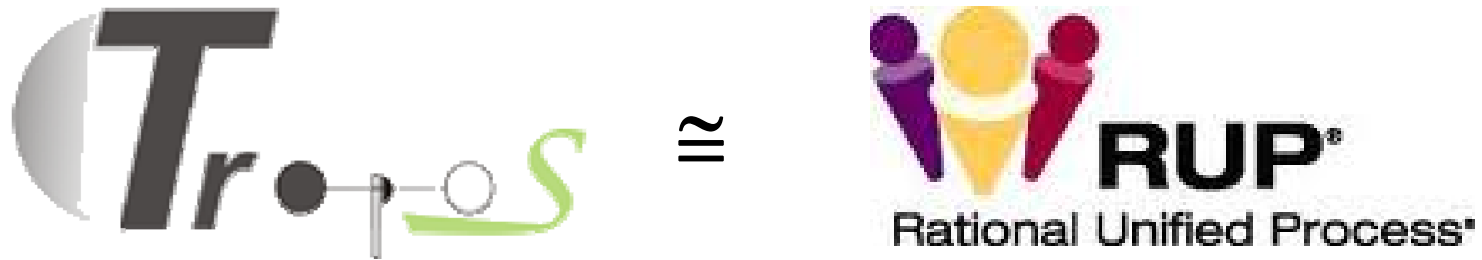


## Open Issue 2. The Method



# Open Issue 2. The Method

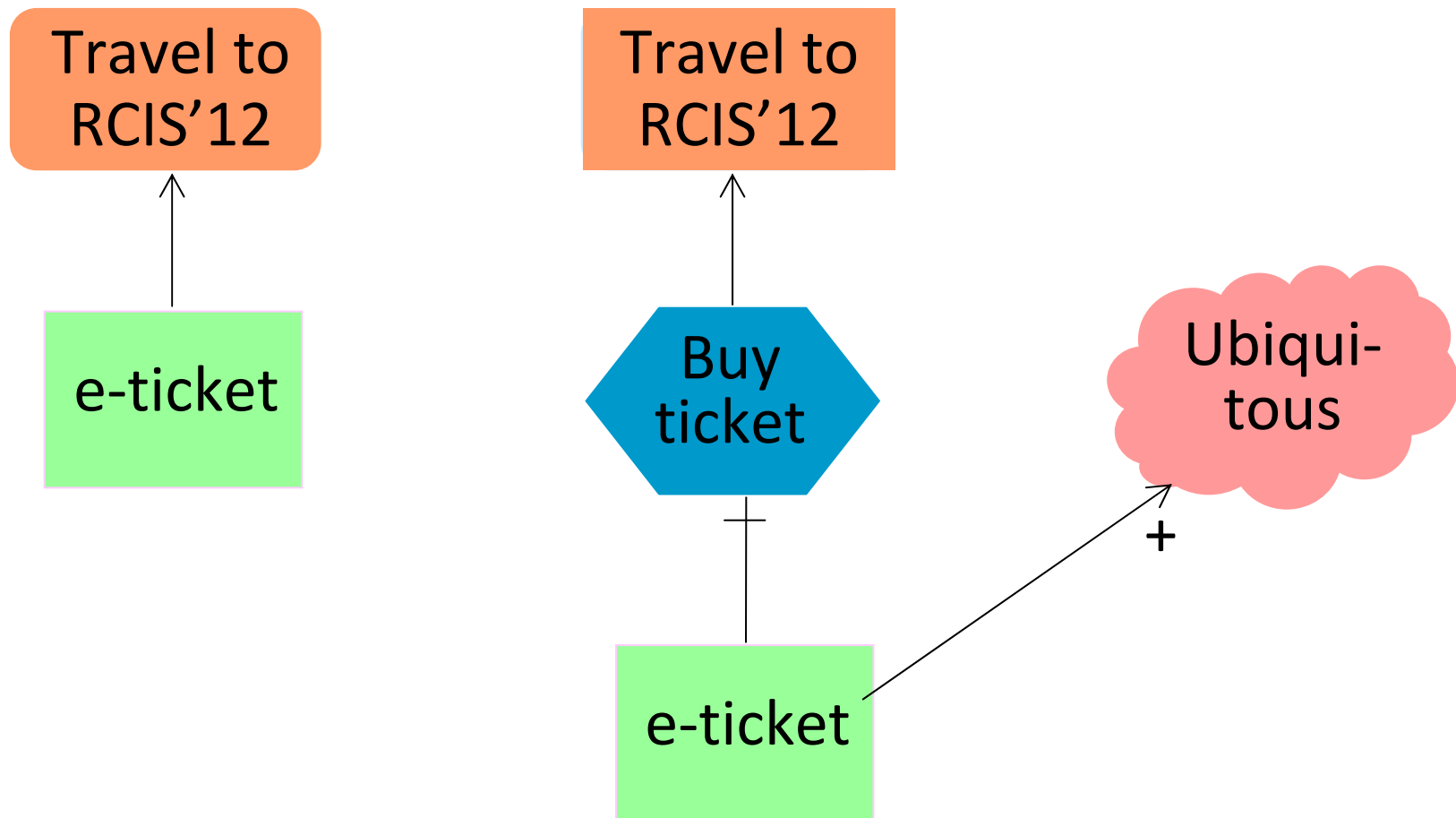
- How are  $i^*$  models built?



***What about lower level?***

# Open Issue 2. The Method

- How are  $i^*$  models built?



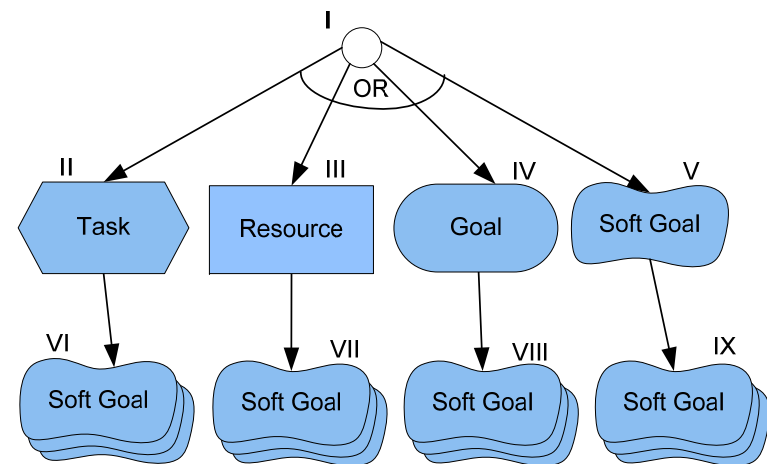
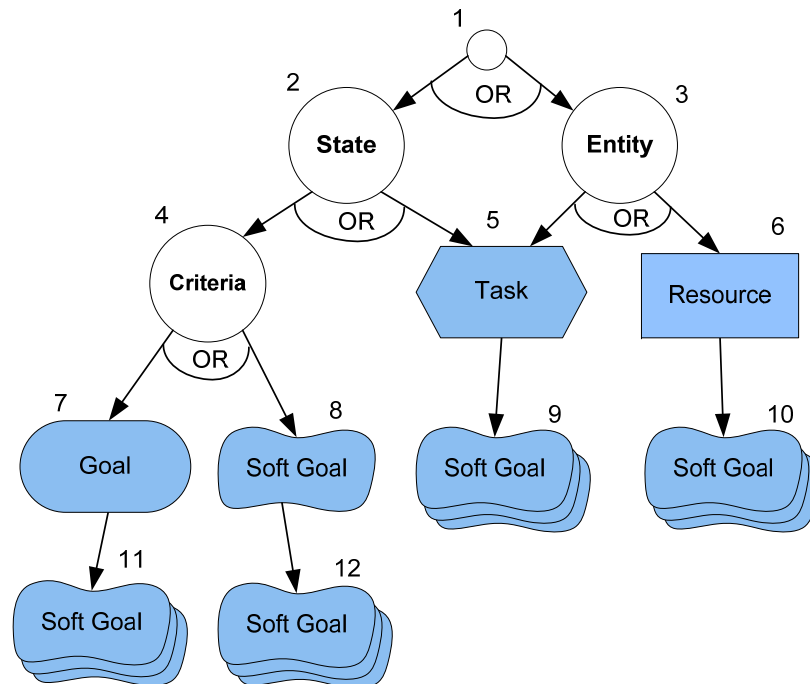
# The Way Ahead

- Promoting some prescriptive rules for model building
  - Steps
  - Refinement rationale: type of element; stop condition
  - Correctness checks
  - Patterns
  - Lexical conditions



# The Way Ahead

- Special emphasis on element decision

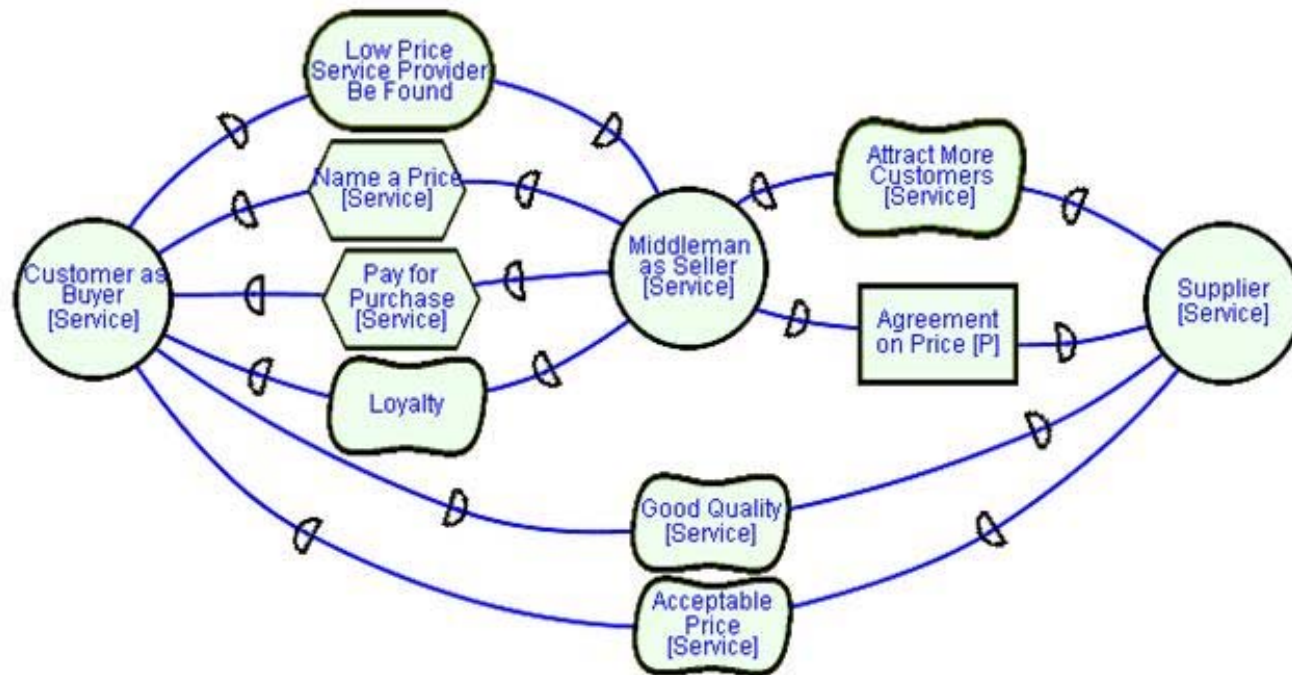


# Open Issue 3. Model Analysis



# Open Issue 3. Model Analysis

- “You can’t control what you can’t measure”



How good is this diagram?

- what does “good” mean?
- how do we know “how”?

# Open Issue 3. Model Analysis

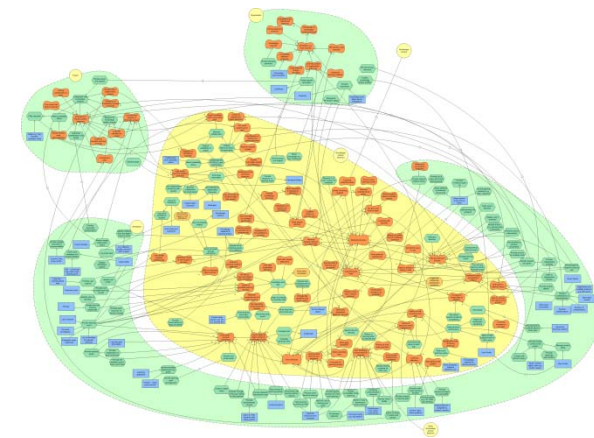
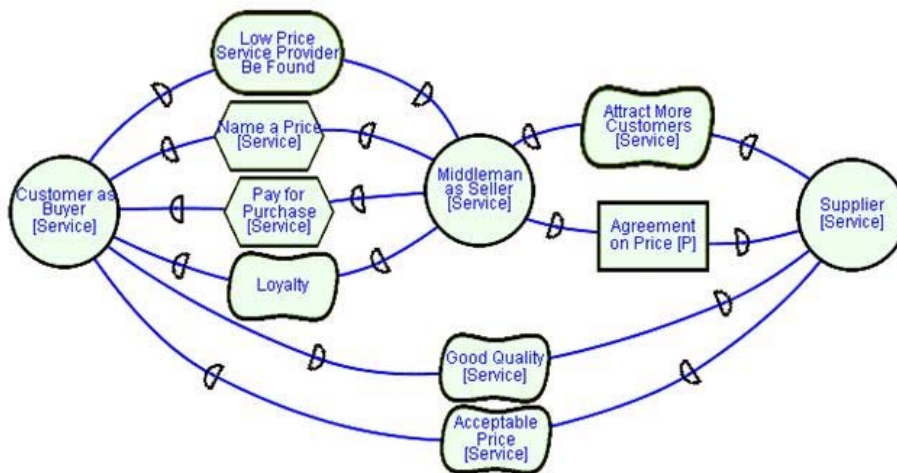
- Quantitative measures

Diagrams	Measure	Property
E-R	Nb. of Entities	Simplicity
	Nb. of Entities and Relationships	Simplicity
Class	Depth of Inheritance Trees	Complexity
	Nb. of children	Reusability
	Nb. of associations	Maintainability
Business Process	Activity Automation Factor	Performance
	Branch Automation Factor	Performance
	Coupling	Maintainability
Statechart	Nb. of activities	Maintainability
	Nb. of Transitions	Maintainability
$i^*$	???	???

# Open Issue 3. The Way Ahead

- Define a suite of  $i^*$  measures

Diagrams	Measure	Property
$i^*$	Nb. of Elements	Simplicity
$i^*$	Nb. of Goals with 1 Means	Workability
$i^*$	Actor Centrality	Performance
$i^*$	Nb. of Automated Tasks	Performance



# Open Issue 4. Scalability et al.



# Open Issue 4. Scalability et al.

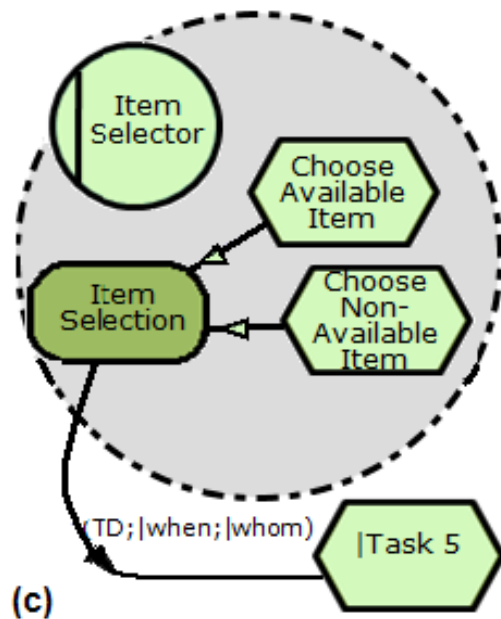
- $i^*$  models do not scale well

Evaluation Criteria	Evaluated issue	Evaluation
Modelling Language	Refinement	Not Well Supported
	Modularity	Not Supported
	Repeatibility	Not Well Supported
	Complexity mgmt.	Not Well Supported
	Expressiveness	Well Supported
	Traceability	Not Well Supported
	Reusability	Not Supported
Pragmatics	Scalability	Not Supported
	Domain applicability	Well Supported

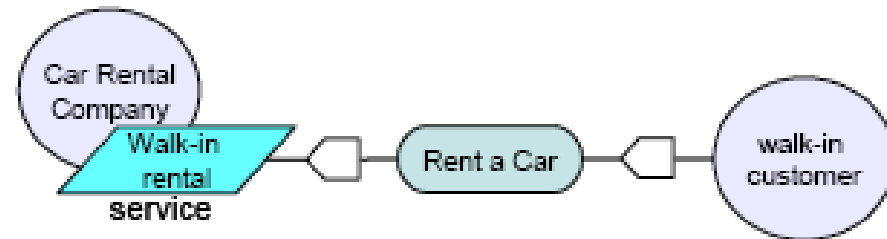
cf. Estrada et al., CAiSE'06

# Open Issue 4. The Way Ahead

- Domain-oriented proposals



***Aspects***

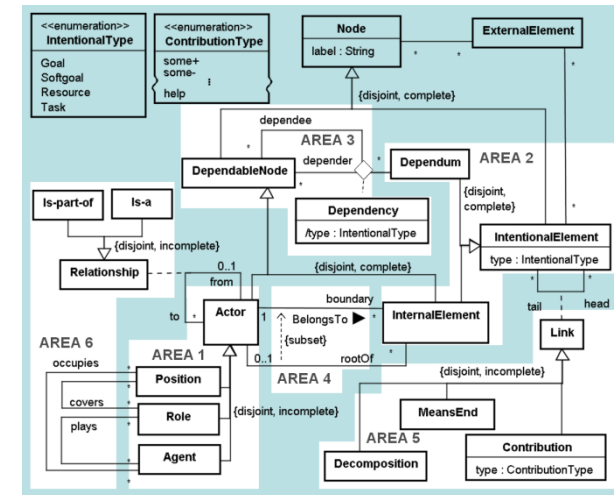
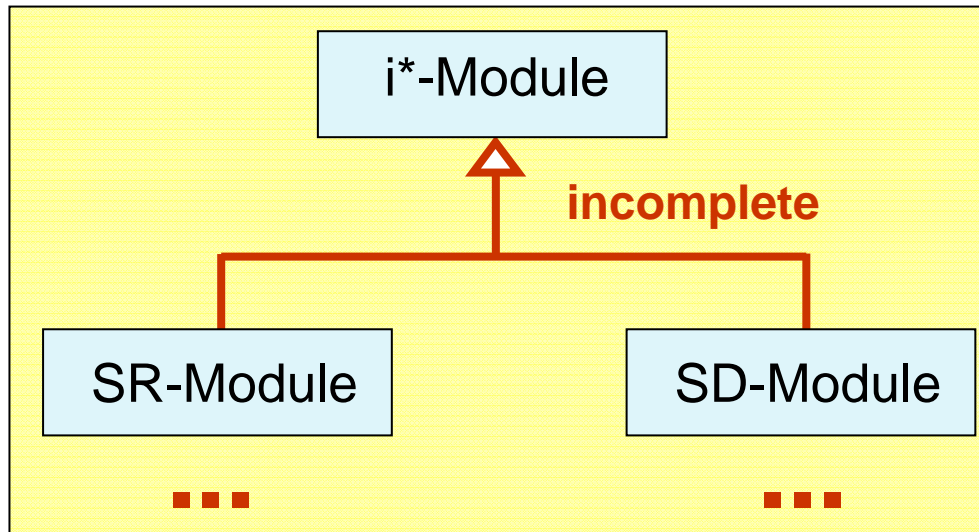


***Services***



# Open Issue 4. The Way Ahead

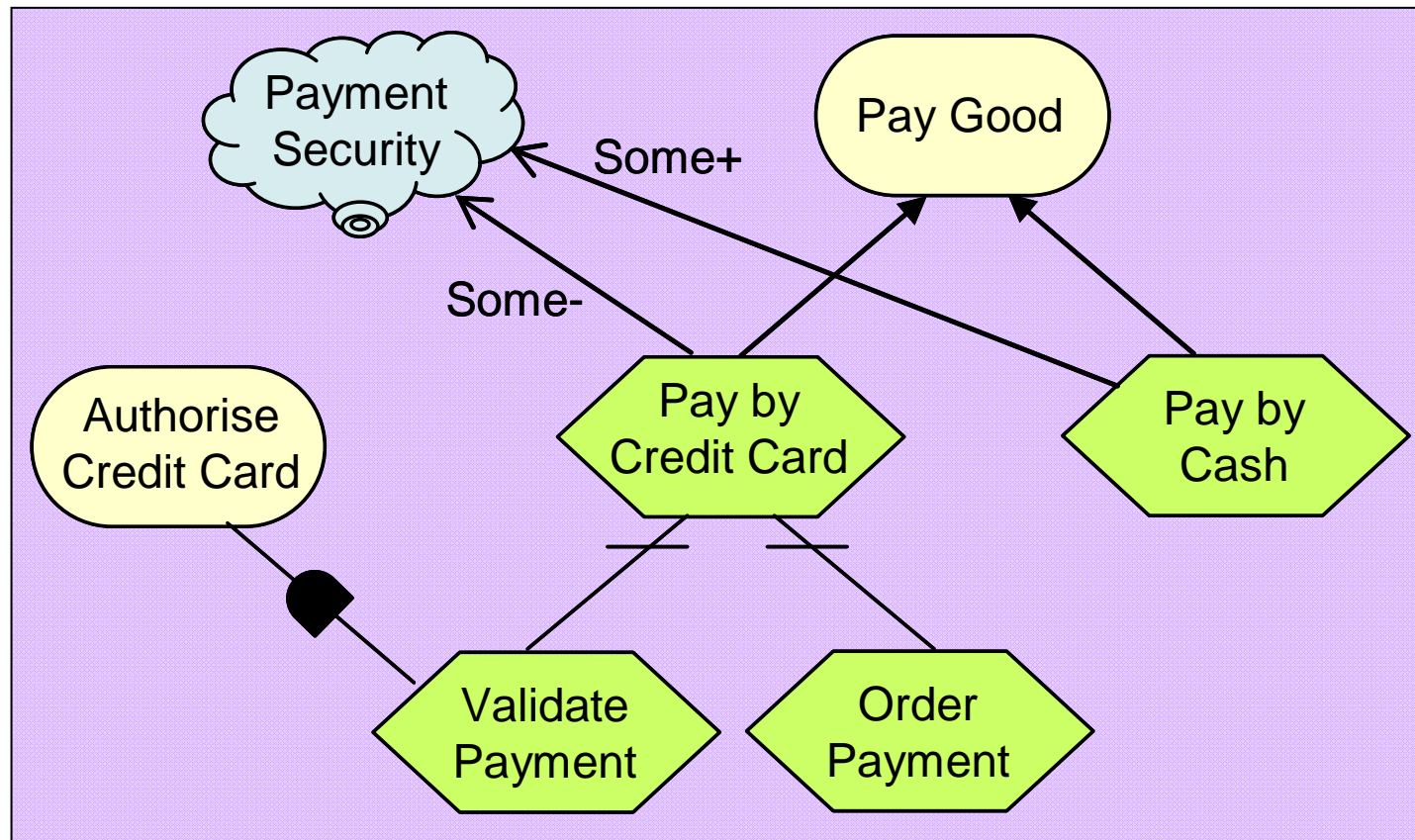
- Generic proposals



coupling

# Open Issue 4. The Way Ahead

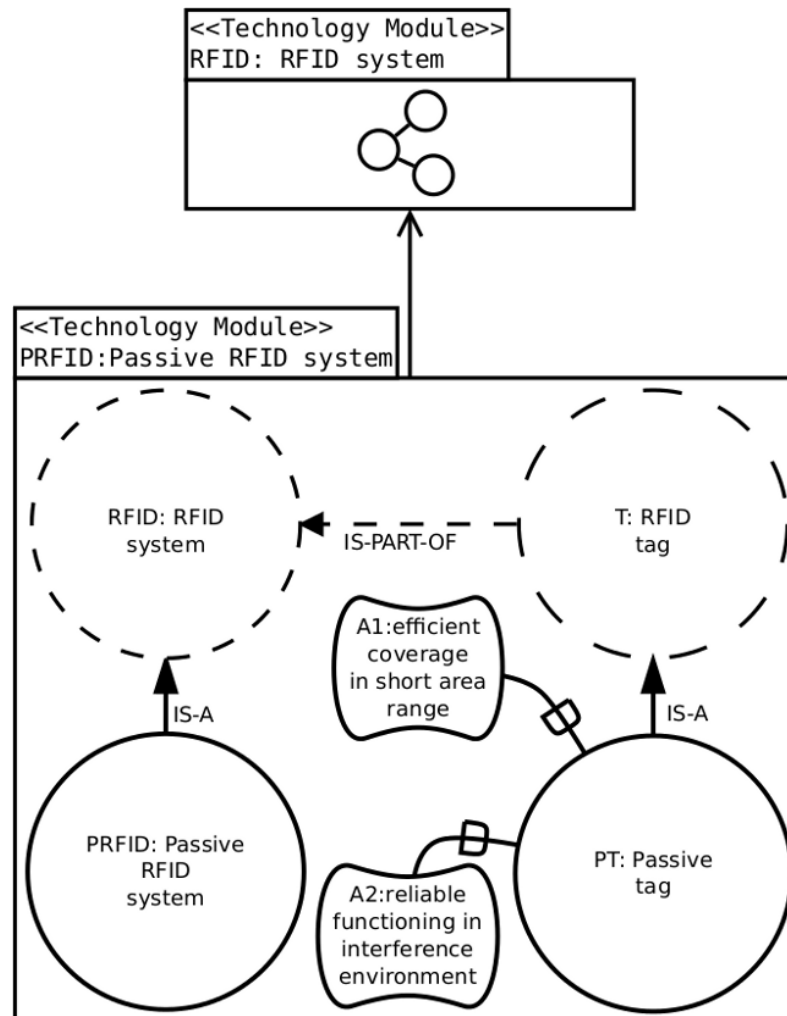
- Generic proposals



Means-end module

# Open Issue 4. The Way Ahead

- Generic proposals

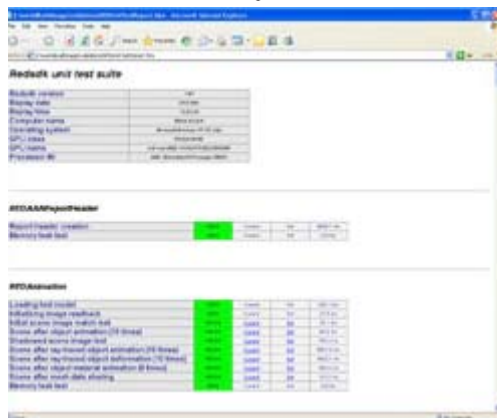
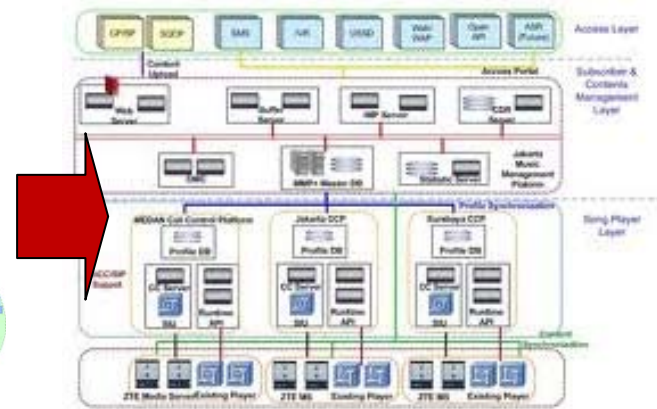
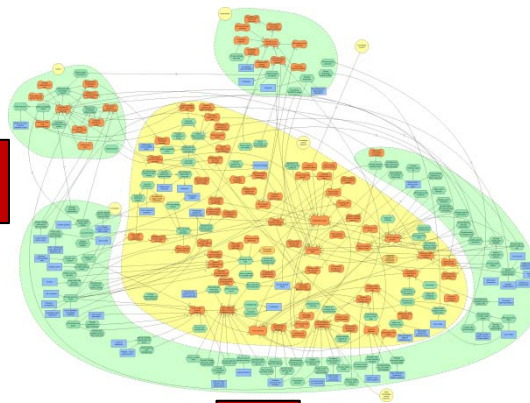
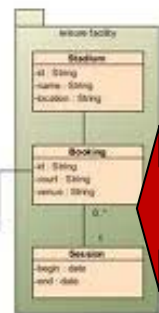
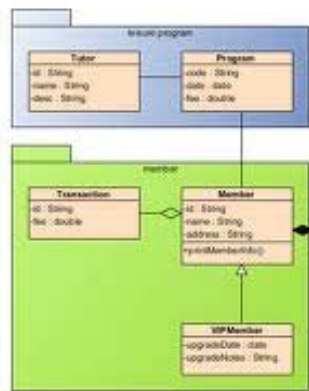


# Open Issue 5. Integration



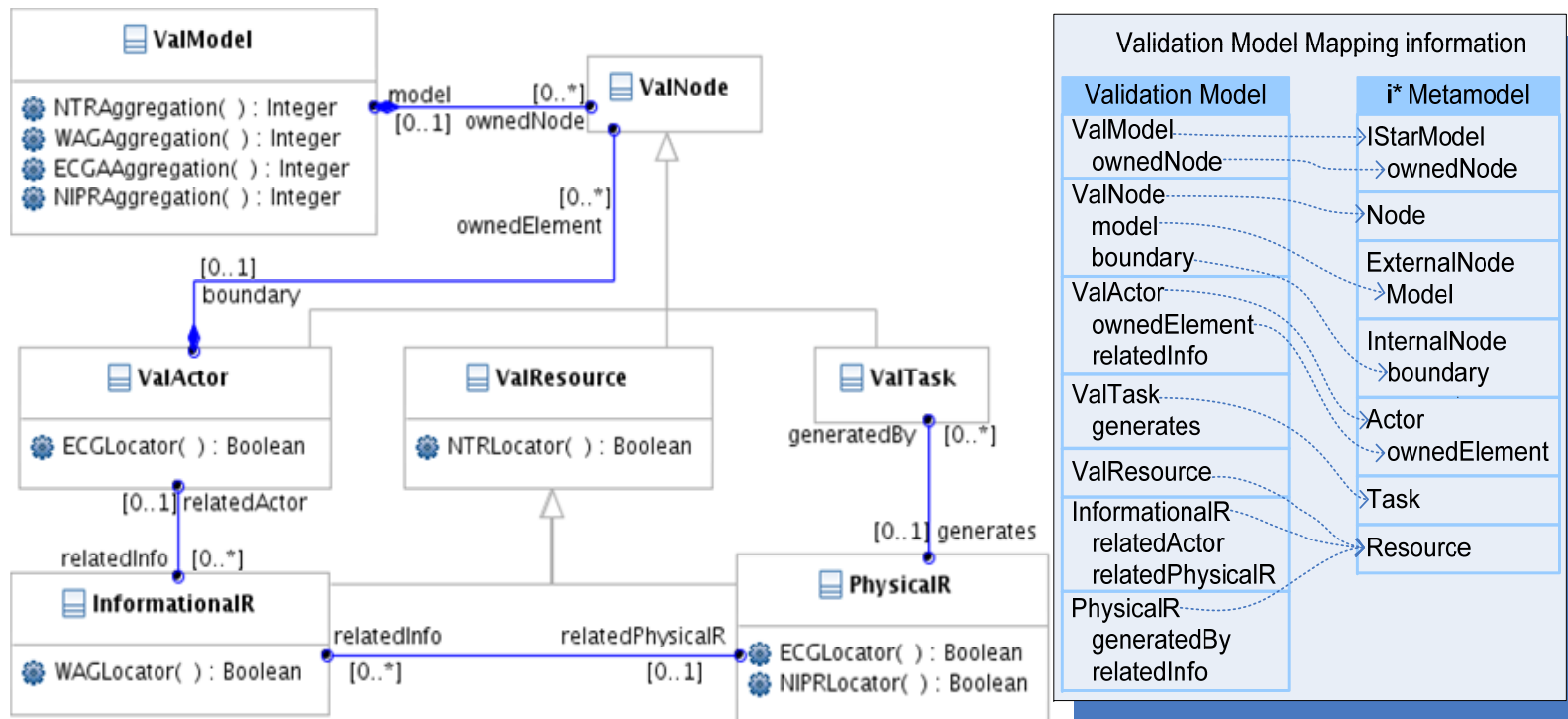
# Open Issue 5. Integration of $i^*$

- Effort on  $i^*$  modeling: Return on Investment



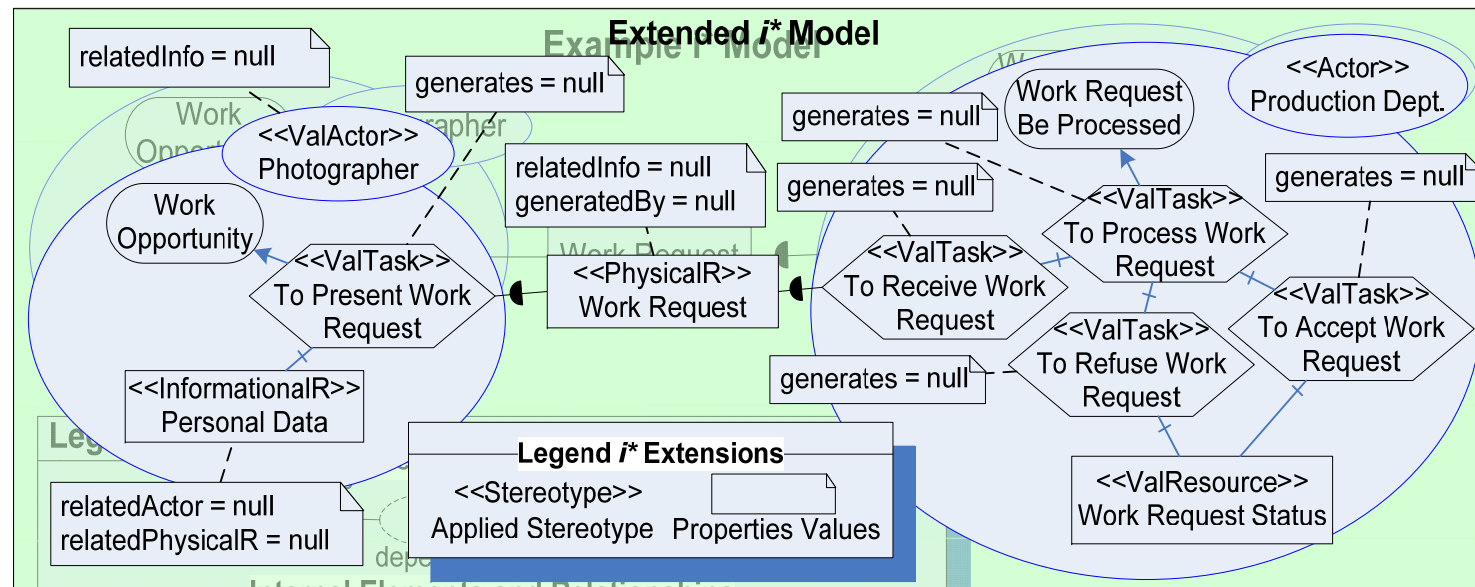
# Open Issue 5. The Way Ahead

- How adequate are the models for this purpose?



# Open Issue 5. The Way Ahead

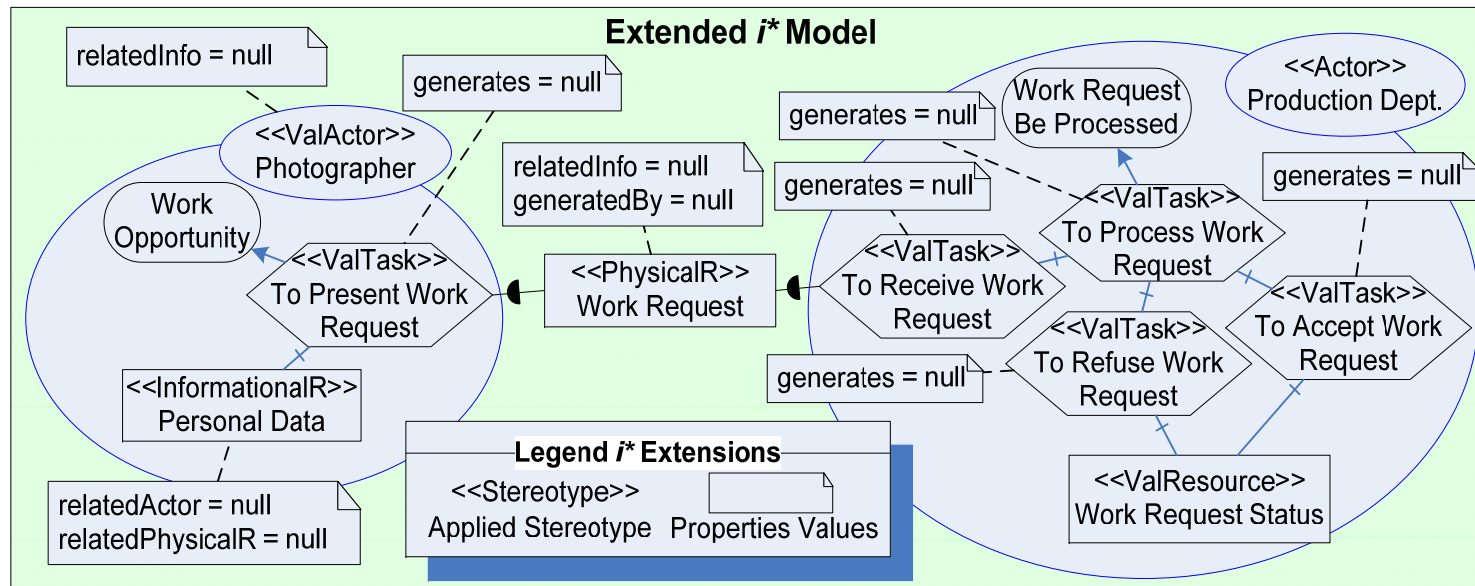
- What extensions are needed in the  $i^*$  language?





# Open Issue 5. The Way Ahead

- What changes are needed in an extended  $i^*$  model according to the value of these measures?





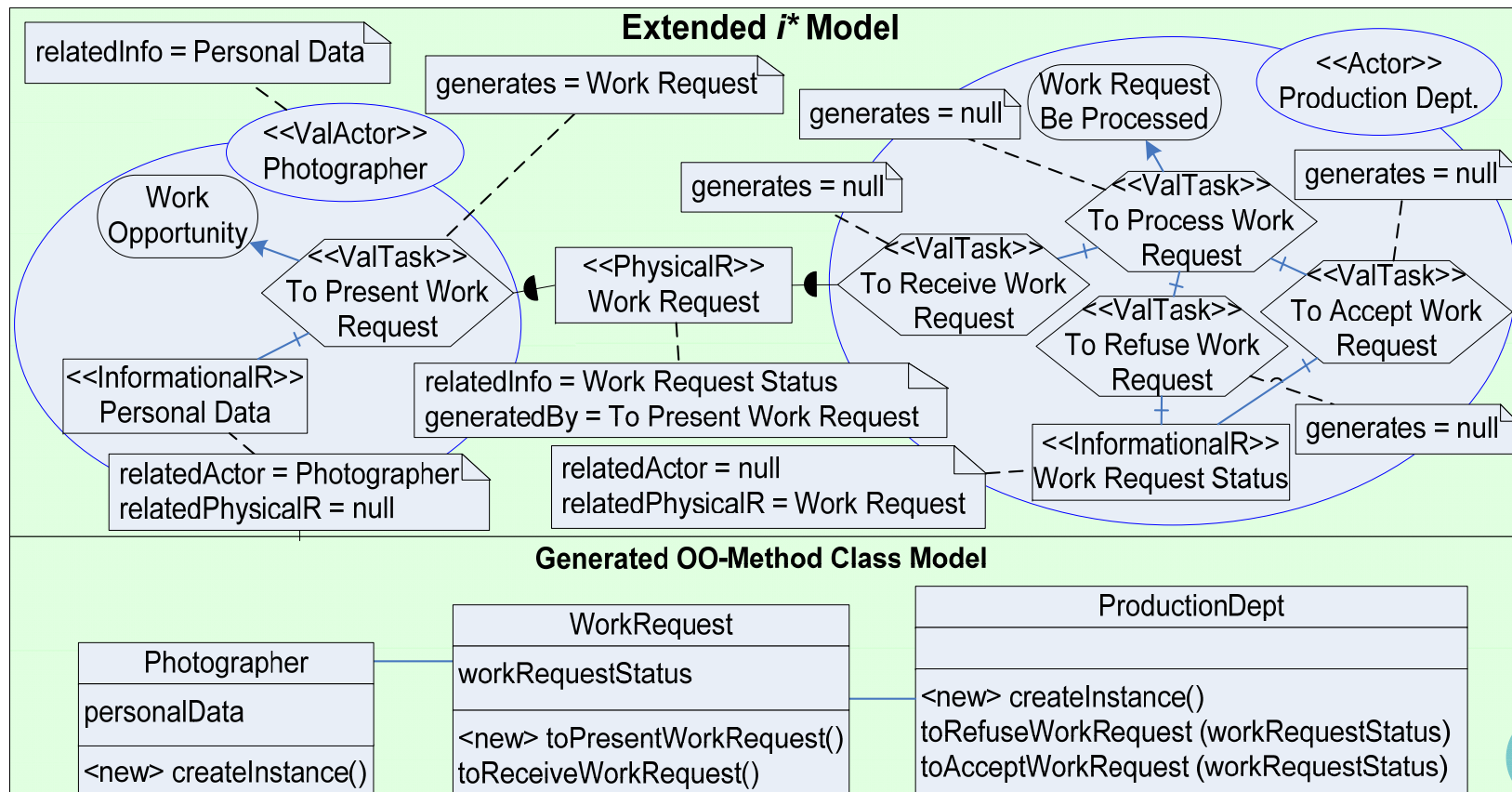
# Open Issue 5. The Way Ahead

- What changes are needed in an extended  $i^*$  model according to the value of these measures?

Measure	Alert	Result	Locator
NTR	Critical	1 R non-transform.	Work Request Status
WAG	Critical	1 IR non-transform.	Personal Data
ECG	Warning	3 classes without att.	Photographer Production Dept. Work Request
NIPR	Warning	1 PR without task	Work Request

# Open Issue 5. The Way Ahead

- What changes are needed in an extended  $i^*$  model according to the value of these measures?



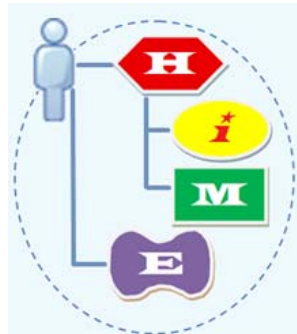
# Open Issue 6. Tool support



# Open Issue 6. Tool support



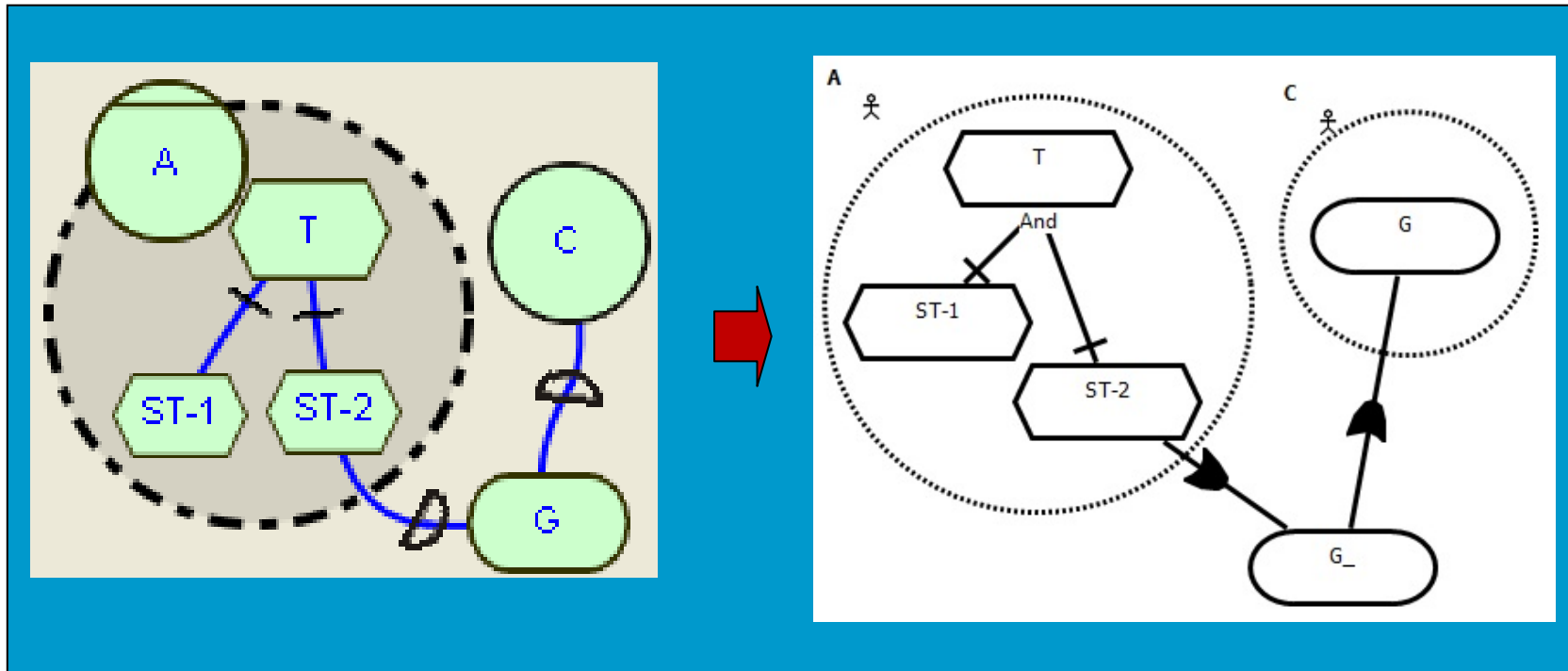
etc...



- Repetition of effort
- Waste of opportunities
- No diagram catalogues

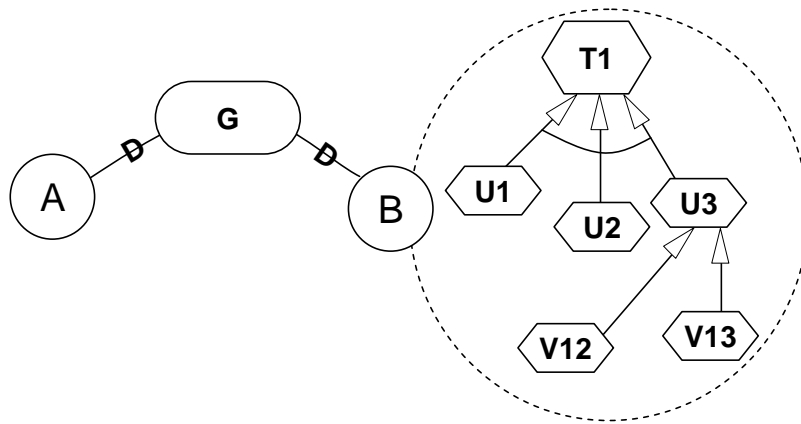
# Open Issue 6. The Way Ahead

- Provide means for interoperability



# Open Issue 6. The Way Ahead

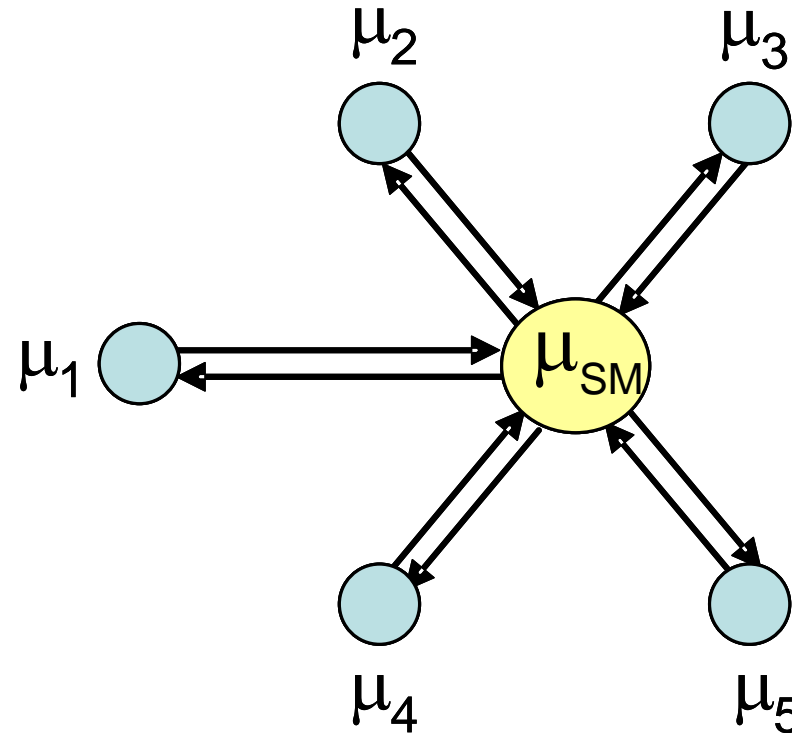
- Adopt an interchange format



```
<istarml version="1.0">
  <diagram name="Tropos's decomposition example">
    <actor id="100" name="A">
    </actor>
    <actor id="200" name="B">
      <boundary>
        <ielement name="T1" type="task">
          <ielementLink type="decomposition" value="and">
            <ielement name="U1" type="task"/>
            <ielement name="U2" type="task"/>
            <ielement name="U3" type="task">
              <ielementLink type="decomposition" value="or">
                <ielement name="V12" type="task"/>
                <ielement name="V13" type="task"/>
              </ielementLink>
            </ielement>
          </ielementLink>
        </ielement>
      </boundary>
    </actor>
    <ielement type="goal" name="G">
      <dependency>
        <depender aref="100"/>
        <dependee aref="200"/>
      </dependency>
    </ielement>
  </diagram>
</istarml>
```

# Open Issue 6. The Way Ahead

- Use of general metamodeling tools; SOA tools

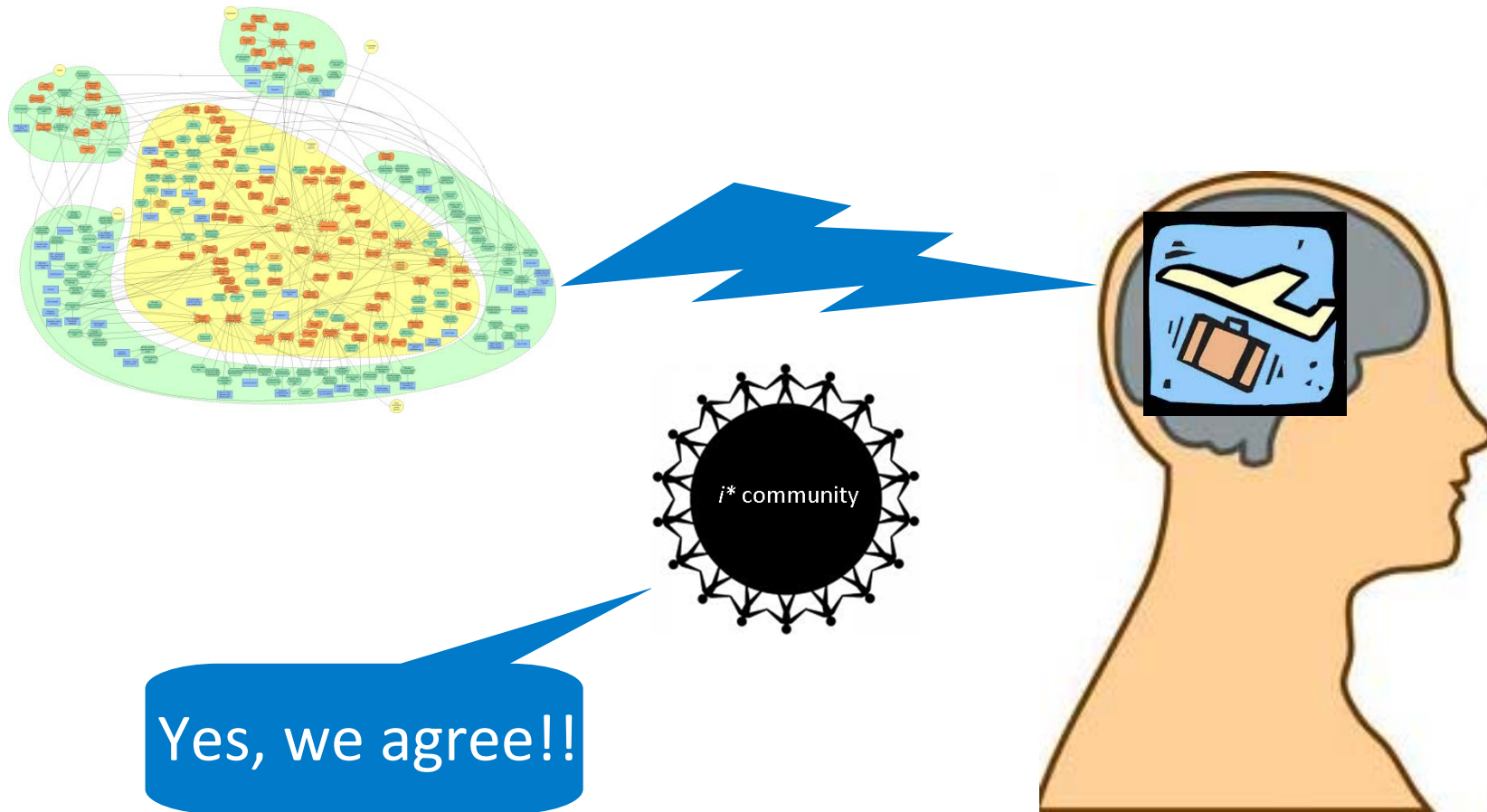


# Community actions



# Community actions

- Formulation and adoption of a fully agreed language core (metamodel + ontology)



# Community actions

- Facilitate powerful tool support
  - OpenOME? jUCMNav? AdoXX?
  - Import/export format (iStarML?)
  - Service-oriented?
  - Make it commercial!!
    - Usability, ...

# Community actions

- Run empirical studies
  - About the language
  - About its practical use (case studies)



# Community actions

- Facilitate dissemination:
  - Practitioner- / student-oriented textbook
  - Model repositories

**The End**

## Take-away messages

- Research on  $i^*$  is in a great moment
- Adequate moment for consolidation
- Some open research issues to be overcome
- Most of them require a community effort



# Acknowledgements

To many people but in particular:

- Carlos Cares, for the foundational aspects
- Lidia López, for discussions on the language core
- Renata and Giancarlo Guizzardi, for the ontological touch

# References Relevant to this Position

- Guizzardi, Franch, Guizzardi. Applying a Foundational Ontology to Analyze the *i\** Framework. RCIS 2012
- Cares, Franch, Mayol, Quer. A Reference Model for *i\**. The *i\** Book, 2011
- Cares, Franch, Perini, Susi. Towards Interoperability of *i\** Models using iStarML. CSI 33(1), 2011.
- López, Franch, Marco. Making Explicit some Implicit *i\** Language Decisions. ER 2011
- Maté, Trujillo, Franch. A Modularization Proposal for Goal-Oriented Analysis of Data Warehouses using *i\**, ER 2011
- Franch, Maté, Trujillo, Cares. On the Joint Use of *i\** with other Modeling Frameworks: A Vision Paper. RE 2011
- Cares, Franch. A Metamodeling Approach for *i\** Model Translations. CAiSE 2011
- Colomer, López, Cares, Franch. Model Interchange and Tool Interoperability in the *i\** Framework: A Proof of Concept. WER 2011
- Franch. Incorporating Modules in the *i\** Framework. CAiSE 2010
- Franch. Fostering the Adoption of *i\** by Practitioners: Some Challenges and Research Directions. In Intentional Perspectives on IS Engineering, 2010
- Carvallo, Franch. On the use of *i\** for Architecting Hybrid Systems. PoEM 2009
- Franch. A Method for the Definition of Metrics over *i\** Models. CAiSE 2008
- Franch et al. Systematic Construction of *i\** SD Models. IJSEKE 17(1), 2007



**Comments and Questions?**